

# DRHEAM CUP<sub>2022</sub>

GRAND PRIX DE FRANCE  
DE COURSE AU LARGE

13 › 24 JULY 2022

START RACE 17 JULY

CHERBOURG  
> LA TRINITÉ

Fasnet Rock

Ile de Man

Shamble W

Wolf Rock

Cherbourg-en-Cotentin

WP Drheam

La Trinité-sur-Mer

The Drheam-Trophy  
Prologue

The DC 600 course  
600 miles  
IRC, FIGARO 3, MULTI 2000,  
MINI 4.50

The DC 1000 course  
1000 miles  
CLASS40, OCEAN FIFTY, IMOCA, RHUM MONO,  
RHUM MULTI, OPEN GRANDS MONOCOQUES

The DC 1500 course  
1500 miles  
ULTIMES

Plateau de Rochebonne

Bouée BXA

Royan

Bilbao

COMPETITION, SHARING, CELEBRATION

QUALIFYING RACE FOR THE  
**ROUTE DU RHUM**  
DESTINATION GUADELOUPE



SAILING INSTRUCTIONS



## DRHEAM-PROMOTION is organising with the YACHT CLUB DE CHERBOURG

### The DRHEAM-CUP / GRAND PRIX DE FRANCE DE COURSE AU LARGE from Wednesday 13 to Sunday 24 July 2022

With the support of the UNION NATIONALE POUR LA COURSE AU LARGE.

#### Organising Authority (OA): Yacht-Club de Cherbourg

#### Organizing Committee (OC)

A general organisation committee has been formed. It includes the board of the Yacht-Club de Cherbourg, Drheam-Promotion and the Race Authority.

## 1 - Applicable rules

**1.1** The rules as defined in the **Racing Rules of Sailing (RRS) 2021-2024**, National prescriptions applicable to foreign competitors attached in the «Appendix 1» of the Notice of Race.

**1.2** Federal rules.

**1.3** Part B section II of COLREG when it replaces rules of Chapter 2 of the RRS, between the legal times of sunset and sunrise (between 21:45 and 06:45 local time for the duration of the event).

**1.4** The current OSR (Offshore Special Regulations), category 3 with liferaft and AIS transponder for boats racing in the DRHEAM-CUP 600, and category 2 for boats taking part in the DRHEAM-CUP 1000 and DRHEAM-CUP 1500.

**1.5** Class rules of the classes concerned.

**1.6** The Notice of Race and Amendments.

**1.7** In the event of conflict in the translation of these Sailing Instructions, the text in French will prevail.

**1.8** In cases of Force Majeure, the Race Authority may issue specific directives that participants must comply with. It can therefore change certain rules in the Notice of race and /or Sailing Instructions.

*The statement [DP] in an SI rule means that the penalty for breach of the rule can, at the discretion of the protest committee, be less than disqualification.*

## 2 - Notices to competitors

Notices to competitors will be displayed on the official notice board:

- at the Chantereyne Port harbour office in Cherbourg,
- at the RACE HQ under a DRHEAM-CUP tent, near the La Trinité-sur-Mer Harbour Office.

## 3 - Changes to Race Instructions

When an amendment to the Sailing Instructions comes into effect on the day it is notified, it will be displayed at least 2 hours before the first warning signal of the day and can be handed to skippers during the departure check-in.

The official times and programmes or any other changes to the schedule of races will be notified to skippers by 20:00 on the day before they take effect.

## 4 - Signals made ashore

The signals made ashore will be made from the flag pole in front of the Yacht Club de Cherbourg.

The Answering Pennant displayed ashore with two sound signals means «the race is postponed; boats must stay in port». The warning signal cannot be given under 60 minutes after the removal of the Answering Pennant.

## 5 - Schedule of races

The programme is presented in Amendment No.1 to the Notice of Race (7. Abridged programme).

#### Changes to the schedule:

In the event of force majeure and in compliance with the terms of the Sailing Instructions, the Organisation Authority may:

- change the programme or delay the start of a race,
- change a course before the start.

## 6 - Race flag

Competitors must fly the **DRHEAM CUP / GRAND PRIX DE FRANCE DE COURSE AU LARGE** (55 x 60 cm) flag provided by the race authority, during the DRHEAM-CUP. It must be at least 1.50m above the deck, on the backstay or starboard shroud for boats which do not have a backstay.

The 25 CLASS 40 selected for the «Rêves de Large» event must fly an additional flag marked «Rêves de Large» on a yellow background from their backstay as soon as the OA hands it to them and until Friday 15 July at 20:00.

## 7 - Racing areas

The racing area will be the Atlantic coast from the Charente Pertuis to the Cotentin, the Eastern Channel, Irish Sea and the Bay of Biscay.

#### Charts required:

Charts enabling the entire course to be mapped.

## 8 - Courses

### 8.1 DRHEAM-CUP 1500, DRHEAM-CUP 1000 and DRHEAM-CUP 600

**8.2.1** The offshore courses are described in **Appendix 1 «Courses»**, including the order in which the marks must be past or the side on which they must be left and the approximate length of the courses.

If sailing conditions on this course do not guarantee the fleet's safety, other courses will be issued.

They will be announced at 20:00 at the latest on the day before the start.

#### 8.2.2 Position reporting

Competitors must self-report at the marks listed in Appendix 3: see model document is attached in **Appendix 3 «Position report»**.

Each competitor must enter the time they pass the marks in their log and be able to show it to the Race Committee at the finish.

Self-reporting on arrival is compulsory (hh:mm:ss in UT+2 and if possible name the boat before and after). A model document is attached in **Appendix 3 «Position report»**.

## 9 - Areas considered obstacles

Are considered obstacles, protected bathing areas, protected areas around diving vessels and all areas closed to shipping listed in Appendix 2 **«PROHIBITED AREAS»**.

It is the skipper's responsibility to know the forbidden or regulated areas.

## 10 - Start

**10.1 Start area: 1 nautical mile approximately to the North-West of the Pointe du Heu, east of the Eastern Breakwater of Cherbourg Harbour..**

The start area can be changed without prior warning by the Race Committee, that will fly the «L» flag from the Race Committee boat.

#### 10.2 Starting line and start procedure

**10.2.1 The start line** will be divided into two areas, the race committee boat will be placed between the two buoys marking the two ends of the starting line:

- **Port side**, between the mast of the race committee boat flying an Orange flag and the course side of an inflatable cylindrical buoy.
- **Starboard side**, between the mast of the race committee boat flying an Orange flag and the course side of an inflatable cylindrical buoy.

If the identified official boats are located near the start buoys, sail boats must not pass between the mark and the boat, from the preparatory signal until they have taken the start, after completing the penalty for any faults. These official boats are considered obstacles under the RRS.

Any breach of this measure will be subject to a protest that may lead to a minimum penalty of 30 minutes after examination by a jury.

**10.2.2 Start procedure:** races will be started in compliance with RRS rule 26 modified with a **warning signal 10 minutes before the starting signal**.

There will be 3 start sequences:

- **the first start will be given at 14:00** (with a warning signal at 13:50),
- the warning signal for the 2<sup>nd</sup> start will be given at 14:10 **for a start at 14:20**,
- the warning signal for the 3<sup>rd</sup> start will be given at 14:30 **for a start at 14:40**.

The warning signal flags will be as follows:

- the «DRHEAM-CUP GRAND PRIX DE FRANCE DE COURSE AU LARGE» flag for the 1<sup>st</sup> start,
- the «CHERBOURG-EN-COTENTIN» flag for the 2<sup>nd</sup> start,
- the «MORBIHAN» flag for the 3<sup>rd</sup> start.

#### 10.2.3 Starting order

**Boats waiting for their start:** boats whose warning signal has not yet been given must avoid the starting area. They are requested to stay in the Southern part of the exclusion zone or outside it.



- **First start:** for the ULTIMES, OCEAN 50, IMOCA, Large monohulls and Rhum Monohulls:
  - the starboard side is for ULTIME and MULTI 50,
  - the port side is for IMOCA, Rhum Mono and Large Monohulls
- **Second start:** for Rhum Multis, Class 40, Multi 2000;
  - the port side is for Rhum Multi and Multi 2000,
  - the starboard side is for CLASS 40.
- **Third start:** for Figaro 3, IRC, IRC Double:
  - the port side is for IRC Crewed,
  - the starboard side is for IRC Double and FIGARO 3.

### 10.3 First Mark after the start

Coffre du Becquet.

### 10.4 Closing the lines

A boat that has not been able to cross the start line within 30 minutes of the start signal must wait for the authorisation and instructions of the Race Committee to take the start. Lateness at the start cannot exceed 2 hours.

### 10.5 Early start:

Under World Sailing Test Rule DR21-01, when a boat does not start in compliance with the definition «Starting», **it must not return to the pre-race side of the starting line. They shall receive a penalty as described in 12.2 without a hearing.**

Boats that are OCS will be warned if possible as soon as possible by VHF on the race channel (72) and/or by Race Committee boat. The absence of a VHF transmission or reception and/or communication from the Race Committee boat cannot open up a request for redress (this modifies RRS 60.1b).

## 11 - Finish

### 11.1 Finishing line

Line described in [Appendix 1 «Course»](#).

### 11.2 Announcing arrival at the finishing line

All competitors must announce themselves to the Race Committee by VHF on the race channel, at least 30 minutes before crossing the finishing line, until VHF contact is made, indicating their sail or dodger number.

Competitors can telephone the **Race Authority** if VHF contact cannot be made.

In event of night-time arrival or in bad visibility, the skipper should light up their sail number a few metres before and as they pass the finishing line and announce their sail or in bad visibility, the skipper should light dodger number by VHF.

After crossing the finish line, boats must lower their sails and head to La Trinité-sur-Mer visitor berths, following the instructions of the harbour by VHF on the race canal, except boats that are able to return to their home ports after crossing the finish line, on decision of the port or the OA.

**After arriving at their definitive berth in La Trinité sur Mer harbour, or at a temporary berth indicated by the port or the OA, the skipper must check out as soon as possible, hand in their self-report sheet and return their beacon to the Race HQ.**

## 12 - Penalty system

**12.1 For all Classes, the RRS 44.1 is modified so that the two-turn penalty is replaced by a one-turn penalty.**

### 12.2 Individual recall and start penalties:

- RRS 29.1 and 30.1: 1 hour penalty without hearing [DP]
- RRS 30.2: 2-hour penalty without hearing. [DP]
- RRS 30.3: 5-hour penalty without hearing. [DP]

### 12.3 Replacement penalties

Breaking a rule other than those in chapter 2 of the RRS may be penalised after a hearing at the discretion of the protest committee, except notification to the contrary in the present Sailing Instructions and Class Rules.

### 12.4 Breaking the COLREGs

When the COLREGs replace the RRS, RRS 44.1 and 44.2 do not apply.

### 12.5 Breaking the restricted zone rules

A boat sailing in a restricted zone defined in appendix 3 may, after a hearing, receive a penalty up to disqualification.

## 13 - Time limit

The finish line will close at 18:00 (UT+2) on **Saturday 23 July 2022.**

## 14 - Protests

**14.1 Protests and request for redress must be written on the forms available from the RACE ORGANISATION tent and be handed in at the latest two hours after the boat has crossed the finishing line.**

**14.2** In the event of arrival between 20:00 and 08:00, competitors who wish to protest have until 10:00 request a hearing.

**14.3** Protests will be heard between 10:00 and 21:00 on each day of racing.

**14.4** In compliance with RRS 61.1(b), the numbers of boats that the Race Committee or Jury intends to protest for an incident seen in the racing area will be displayed on the official notice board prior to the end of the deadline indicated in SI 13.1 above.

**14.5** If the Race committee cannot hand in their protests within the deadline indicated in SI 13.1, competitors will be informed on the notice board of the extension of the Race committee protest submission deadline (this modifies RRS 61.1 (b) and RRS 61.3).

**14.6** Summons will be displayed between 10:00 and 20:00 each day of the race and at the latest 30 minutes after the protest submission deadline to inform competitors of the location, dates and times of the hearings in which they are parties to or cited as witnesses.

**14.7** A request for the reopening of a hearing or redress must be handed in at the latest 30 minutes after the party requesting a reopening is informed of the decision.

## 15 - Rating

The boats' ranking groups, classes and ratings will be released and displayed at the latest the day before the start of the **DRHEAM-CUP / GRAND PRIX DE FRANCE DE COURSE AU LARGE.**

### 15.1 Corrected time rankings

**15.1.1 IRC boats will race in corrected time, according to the formula:**

Corrected time = Real time x TCC; the TCC is that of the 2022 IRC certificate.

**15.1.2 Multihulls race in corrected time, according to the Multi 2000 formula:**

Compensated time = Real time x Allocated rating; The allocated rating is that of the valid certificate issued by the Association des Multicoques Habitables.

### 15.2 The following classes race in real time:

- Ultime class
- Class40 solo
- Ocean 50
- Figaro class, solo and double-handed
- Open Large Monohulls with a crew of 2 people or more
- Rhum Multis and Rhum Monos
- Mini 650

## 16 - Safety

### 16.1 Race Channel

The VHF race channel is **72.**

Dual watch on **channels 16 and 72** is compulsory for the duration of the race. In the event of a technical fault, **channel 16** has priority.

### 16.2 AIS transponder

Boats must be equipped with a working AIS transponder, checks will be carried out before the start; checks will be carried out before the start. **The AIS transponder should stay in transmit/receive mode during the DRHEAM-CUP / GRAND PRIX DE FRANCE DE COURSE AU LARGE.**

### 16.3 Distress beacon

Distress beacons, EPIRB or PLB are recommended but are only compulsory for the DRHEAM-CUP 1000 and DRHEAM-CUP 1500. Boats which do have the equipment must, as soon as possible, send to the Race Authority:

- the hexadecimal no. of the beacons and/or PLB onboard with proof that they have been correctly registered,
- The identification code card for EPIRB,
- For PLB: A screen print of the beacon details French register of distress beacons 406 MHz Cospas/Sarsat (<https://registre406.cnes.fr/sarsatweb/do/login>).

### 16.4 Check-in at start

Check-in COMPULSORY open on Sunday 17 July from 09:00 to 11:30 in the RACE ORGANISATION tent.

### 16.5 Check-out on arrival

A check-out system on arrival is organised conjointly with the return the **DRHEAM-CUP / GRAND PRIX DE FRANCE DE COURSE AU LARGE** beacons and the self-report sheet to the RACE ORGANISATION tent in La Trinité-sur-Mer, as soon as possible after the arrival of the boat.

Competitors who do not check out within the time limit may be protested by the Race Committee.

### 16.6 Retiring

Competitors who retire **must** inform the race authorities in the following manner:

- **By telephone, to the Race Authority**  
+ 33 (0)6 11 60 82 22
- **or the Race Committee:**  
**Alexandre BOUCHARD +33 (0)6 11 53 69 43**
- and confirm in writing to the following address:  
[direction.course@drheam-cup.com](mailto:direction.course@drheam-cup.com)
- if there is no mobile phone reception, to other competitors in VHF range on race channel 72
- Or on channel 16, to authorities on watch: semaphores, CROSS, etc

**No matter how the Race authority is informed, retirement must be confirmed in writing and handed to the Race HG or sent by e-mail if the retiring competitor is not going to the port of Cherbourg.**

**16.7 Class rule checks:** Class rule and/or safety equipment checks may be carried out at any time without prior notice by a member of the Technical Committee or by request of the jury, the race committee or the race authorities.

### 16.8 Use of the engine (RRS 42.3(i))

When, due to weather conditions leading to low winds, and the ability of boats to progress is compromised to the point that there is a risk of imminent collision with ships in areas with high density shipping traffic, competitors may use their engine to avoid collision within the conditions described in RRS 42.3 (i).



Immediately after this manoeuvre, competitors must inform the Race Manager. After they have finished, they must hand in a detailed report to the Race Committee within the time limit for the submission of protests.

### 16.9 Solo Diving

**a)** Diving during the race is authorised to remove any unwanted objects caught in immersed appendages, and for that purpose only. This modifies the term «to swim» in the first sentence of the RRS 48.2.

**b)** In compliance of the second sentence of the RRS 48.2, to carry out this operation, the boat must be slowed as much as possible, meaning the foresails must be lowered and under sheeted out mainsail alone, the boat must head towards the wind. The skipper can only get into the water if the boat's speed is below 1 knot.

**c)** The skipper must take all measures to ensure that this manoeuvre takes place with maximum safety.

**d)** Compulsory declaration to the nearest competitor.

- The recipient must confirm receipt.
- The skipper must report back to the competitor to inform them that all is well.
- The delay between both calls cannot exceed 3 minutes.

**e)** Failure to comply with one of the measures above can lead to a protest from a competitor and a report from the Race Authority to the Race Committee, which can enter a protest.

**f) FFVoile Recommendation:** When diving during a race to intervene on immersed appendages, wearing light Lycra-type clothing or a thin insulated suit with a pocket in which a personal AIS beacon can fit (OSR 4.22.1b) is recommended.

## 17 - Identification

**17.1** During the registration process, the race organisation will provide competitors with markings.

**To receive them, the competitor must provide a first €800 deposit** written to DRHEAM-PROMOTION for the flags lent by the organisers for the entire duration of the Race.

**Once the flags are returned, the deposit will be returned to the competitor.**

**If the competitor cannot provide cheques, they must:**

- pay the deposit to DRHEAM-PROMOTION by bank transfer to the account **IBAN No: FR40 3000 2007 7500 0000 7486 D16** before 10 July 2022, mentioning the NAME OF THE BOAT and SKIPPER,
- send their bank details to the address **dossier.inscription@drheam-cup.com**
- once the flags lent by the organisation are returned, they will be refunded by bank transfer on the account for which they provided the details.

**17.2** Competitors must display:

**17.2.1 For the duration of the race:**

- 2 DRHEAM-CUP / GRAND PRIX DE FRANCE DE COURSE AU LARGE stickers to be stuck to the hull, at the bow, 1 to starboard and 1 to port. An exemption can be requested to the OA if these stickers are likely to damage hull decoration film,
- 2 spray dodgers, except for boats which have not been given spray dodgers by the OA.  
+ DRHEAM-CUP / GRAND PRIX DE FRANCE DE COURSE AU LARGE Race flag (55x60 cm).

**17.2.2** On the Cherbourg-en-Cotentin Port, as soon as received at and until the start area on Sunday 17 July, then as soon as the finish line is crossed in the channel and port of La Trinité-sur-Mer until Sunday 24 July, end of the DRHEAM-CUP / GRAND PRIX DE FRANCE DE COURSE AU LARGE:

- 1 large flag «DRHEAM-CUP / GRAND PRIX DE FRANCE DE COURSE AU LARGE»
- The «partner» flags (CHERBOURG-EN-COTENTIN, AGGLOMÉRATION LE COTENTIN, DÉPARTEMENT DE LA MANCHE, RÉGION NORMANDIE, DÉPARTEMENT MORBIHAN, LA TRINITAINE, AC-CASTILLAGE DIFFUSION, MARINEPOOL, AXESAIL, ...)

**17.3 Retour des cagnards et des pavillons de l'organisation :**

**17.3.1** The spray dodgers and flags (untied, folded and tidied in their bag) will be returned to the RACE ORGANISATION tent in La Trinité-sur-Mer on Sunday 24 JULY from 14:00 to 18:00.

**17.3.2.** If you retire, the race organisation's spray dodgers and flags will be sent (if they cannot be handed back) postage paid to:

**DRHEAM-CUP 2022**  
Chez TECHNIQUE-VOILE  
Rue du Cabestan  
Z.A de Kermarquer  
56470 La Trinité sur Mer  
FRANCE

## 18 - Communications

To share the experience of LA DRHEAM-CUP CHERBOURG-LA TRINITÉ / GRAND PRIX DE FRANCE DE COURSE AU LARGE, within the limitations of onboard communications, each boat must send photos and videos of life on board (specify the boat name) to the race organisation, directly or via its press department, to the communications team's e-mail address [media@drheam-cup.com](mailto:media@drheam-cup.com) or by WhatsApp: + 33 (0)6 83 00 83 83.

These images will be published online on social networks and on the race website. They may also be sent to the media.

### Contacts

**Caroline MULLER – Communications and Press**

[cmuller@drheam-cup.com](mailto:cmuller@drheam-cup.com)  
Tel : +33 06 83 00 83 83

**Adrien FRANCOIS –Community Manager**

[contact@adrienfrancois.fr](mailto:contact@adrienfrancois.fr)  
Tél : +33 6 62 60 92 13

**Erwan RIQUIER – Video production**

[erwan.riquier@bia-seaevents.tv](mailto:erwan.riquier@bia-seaevents.tv)  
Tel : +33 6 22 54 18 34

**Thierry MARTINEZ – Photographer**

[thierry@thmartinez.com](mailto:thierry@thmartinez.com)  
Tél : +33 6 07 09 38 92

### Social networks

Each competitor is invited to share their adventure on social networks, making sure to tag Drheam Cup (#Drheamcup2022) for greater visibility.

- **FACEBOOK:** @drheamcup
- **TWITTER:** @DrheamCup
- **INSTAGRAM :** Drheam\_Cup

## 19 - Tracking beacon

Each boat will be equipped with a satellite tracking device. All efforts must be made to facilitate the fitting of tracking devices before the race and to keep them in perfect working condition during the race

**To receive it, the competitor must provide a €900 deposit** cheque written to DRHEAM-PROMOTION for the locator beacon lent by the organisers for the entire duration of the Race.

**Once the beacon is returned, the deposit cheque will be returned to the competitor.**

**If the competitor cannot provide cheques, they must:**

- pay the deposit to DRHEAM-PROMOTION by bank transfer to the account **IBAN N° : FR40 3000 2007 7500 0000 7486 D16** before 10 July 2022, mentioning the NAME OF THE BOAT and SKIPPER,,
- send their bank details to the address **dossier.inscription@drheam-cup.com**
- after returning the beacon, the deposit will be refunded by bank transfer on the account for which they provided the details.

**19.1** If you abandon, the beacon should be sent (if it cannot be handed back) postage paid to:

**DRHEAM-CUP 2022**  
Chez TECHNIQUE-VOILE  
Rue du Cabestan  
Z.A de Kermarquer  
56470 La Trinité sur Mer

## 20 - Trash disposal (RRS 55)

Boats must not dispose of their waste at sea. Waste must be kept on board until the crew disembarks.

## 21 - Prizegiving and Prizes

**Prizegiving for La DRHEAM-CUP / GRAND PRIX DE FRANCE DE COURSE AU LARGE.**

It will be held on Sunday 24 July at 11:00 in La Vigie Room in La Trinité-sur-Mer.

It will be followed by a cocktail lunch.

## 22 - Decision to take part in a race

A competitor's decision to take part in a race or remain in a race is their sole responsibility. Therefore, the organising authority may not be held liable for any damage (equipment or bodily harm) caused by the competitor's decision to take part in the race or remain in the race.

## 23 - Judging body:

President of the Jury:	Patrick Bréhier
President of the Race Committee:	Alexandre Bouchard
President of the Technical Committee:	Nathalie Monier
Equipment Inspectors:	Tiphaine Riechers Michel Moyou Dominique Flayac



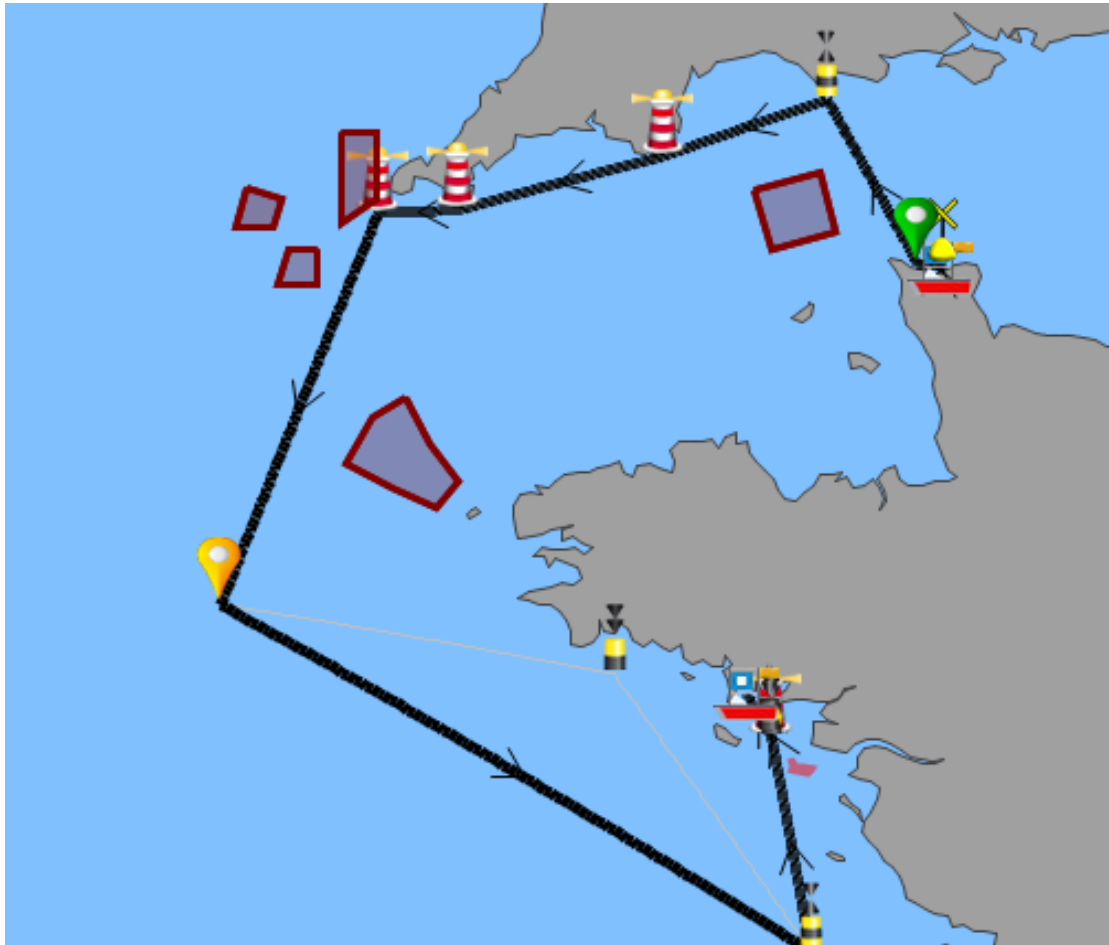




## APPENDIX 1 COURSES

(positions of headlands are for information only, the headland must be passed, not the position)

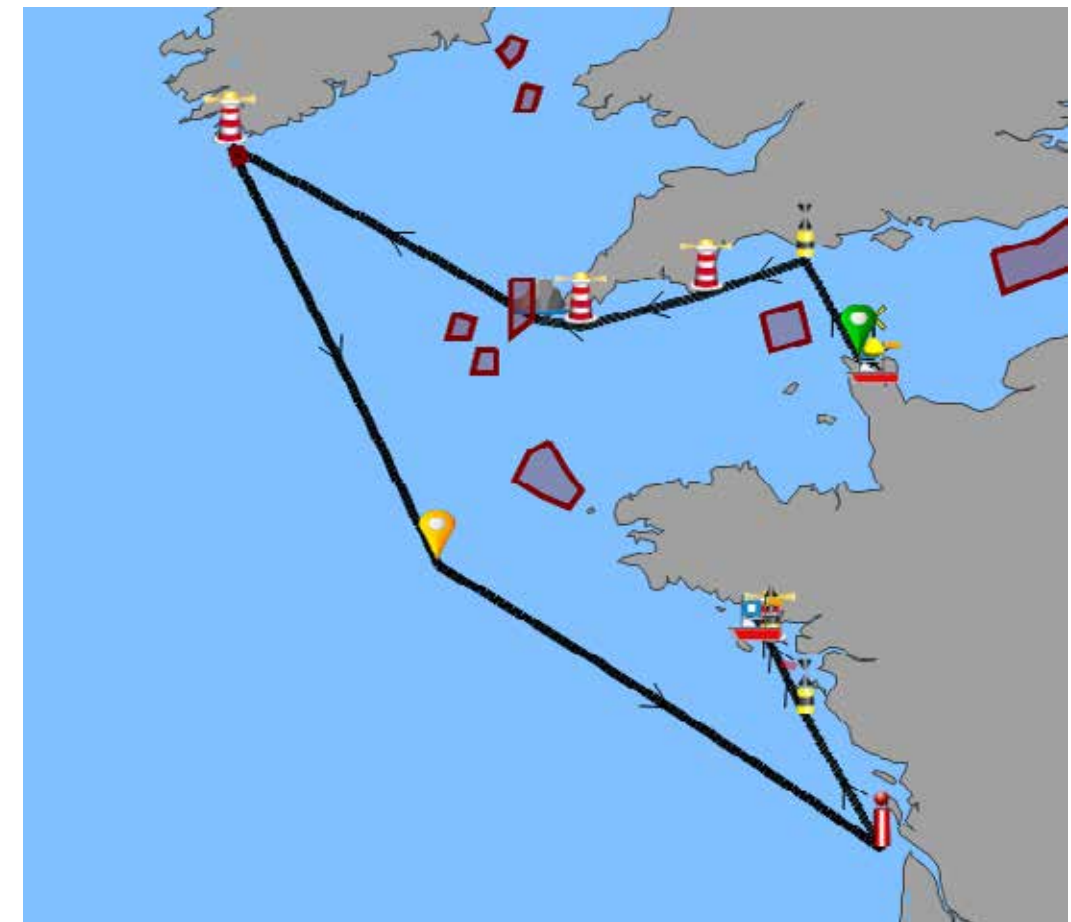
### DRHEAM-CUP 600 COURSE



Order	Waypoint		Side	Position
1	start			49°40.000 N 001°32.199 W
2	COFFRE DU becquet	Round	Port	49°41.190 N 001°32.052 W
3	Urville	Round	Starboard	49°41.592 N 001°43.294 W
4	W SHAMBLES	Round	Port	50°29.776 N 002°24.413 W
5	START POINT'	Leave	Starboard	50°13.331 N 003°38.541 W
6	Lizard point	Leave	Starboard	49°57.612 N 005°12.120 W
7	WOLF ROCK'	Round	Port	49°56.695 N 005°48.578 W
8	DRHEAM CUP	Round	Port	48°00.000 N 007°00.000 W
9	JUMENT DE GLÉNAN	Leave	Port	47°38.783 N 004°01.398 W
10	ROCHEBONNE NO	Round	Port	46°12.850 N 002°32.000 W
11	GRANDS CARDINAUX'	Leave	Port	47°19.274 N 002°50.095 W
12	COHFOURNIK Hoëdic	Leave	Port	47°19.490 N 002°49.694 W
13	ER GURANNIC'H Hoëdic	Leave	Port	47°20.508 N 002°50.438 W
14	Finish in La Trinité			47°32.500 N 002°59.800 W

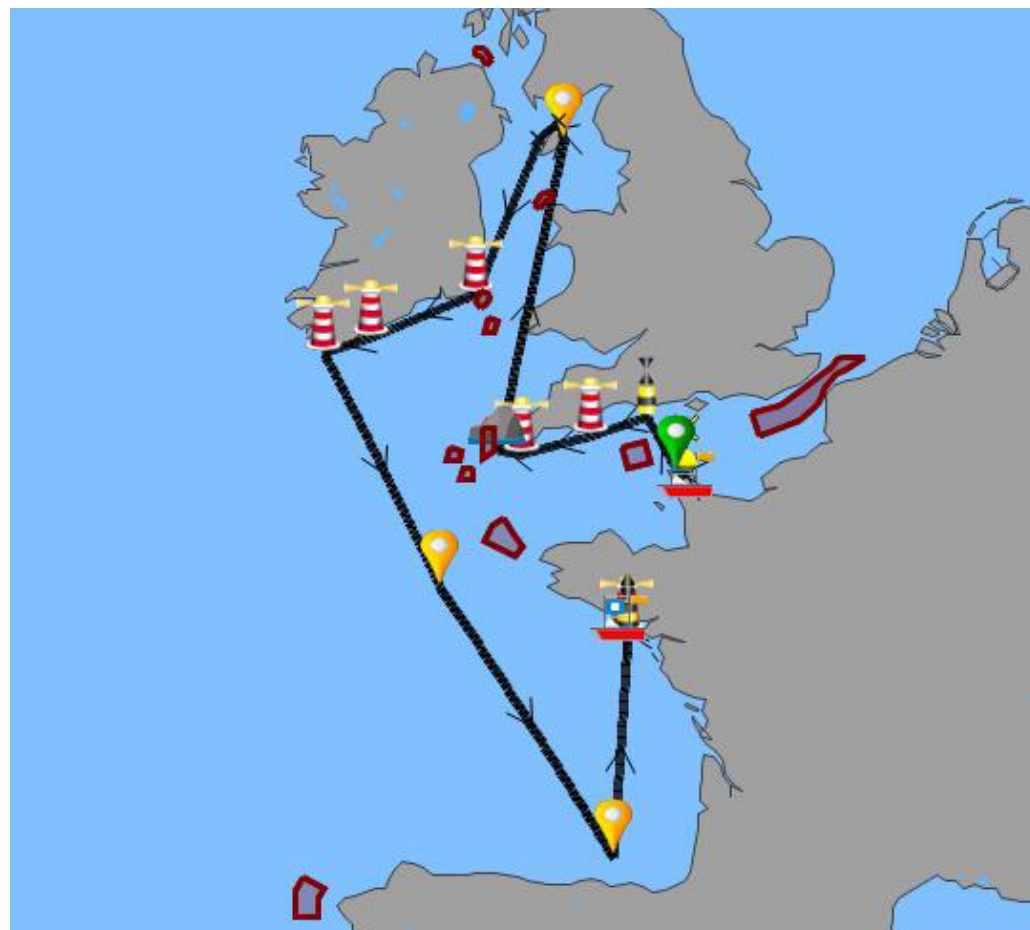
### DRHEAM-CUP 1000 COURSE

(Large Monohulls, Class40, Ocean 50, IMOCA, Rhum Mono, Rhum Multi)



Order	Waypoint		Side	Position
1	start			49°40.000 N 001°32.199 W
2	COFFRE DU becquet	Round	Port	49°41.190 N 001°32.052 W
3	Urville	Round	Starboard	49°41.592 N 001°43.294 W
4	W SHAMBLES	Round	Port	50°29.776 N 002°24.413 W
5	START POINT'	Leave	Starboard	50°13.331 N 003°38.541 W
6	Lizard point	Leave	Starboard	49°57.612 N 005°12.120 W
7	HELLA POINT	Leave	Starboard	50°00.594 N 005°43.176 W
8	Fastnet	Round	Port	51°23.359 N 009°36.178 W
9	DRHEAM CUP	Round	Port	48°00.000 N 007°00.000 W
10	BXA	Round	Port	45°34.142 N 001°26.647 W
11	LES CHIENS PERRINS	Leave	Starboard	46°43.607 N 002°24.581 W
12	GRANDS CARDINAUX'	Leave	Port	47°19.274 N 002°50.095 W
13	COHFOURNIK Hoëdic	Leave	Port	47°19.490 N 002°49.694 W
14	ER GURANNIC'H Hoëdic	Leave	Port	47°20.508 N 002°50.438 W
15	Finish in La Trinité			47°32.500 N 002°59.800W

## DRHEAM-CUP 1500 COURSE ULTIME



Order	Waypoint		Side	Position
1	start			49°40.000 N 001°32.199 W
2	COFFRE DU BECQUET	Round	Port	49°41.190 N 001°32.052 W
3	Urville	Round	Starboard	49°41.592 N 001°43.294 W
4	W SHAMBLES	Round	Port	50°29.776 N 002°24.413 W
5	START POINT	Leave	Starboard	50°13.331 N 003°38.541 W
6	LIZARD POINT	Leave	Starboard	49°57.612 N 005°12.120 W
7	HELLA POINT	Leave	Starboard	50°00.594 N 005°43.176 W
8	Isle of Man *	Round	Port	54°24.600 N 004°22.300 W
9	TUSKAR	Leave	Starboard	52°12.167 N 006°12.347 W
10	KINSALE POINT	Leave	Starboard	51°36.301 N 008°32.044 W
11	FASTNET	Round	Port	51°23.359 N 009°36.178 W
12	DRHEAM CUP	Leave	Port	48°00.000 N 007°00.000 W
13	BILBAO VIRTUAL	Round	Port	43°50.000 N 003°09.000 W
14	GRANDS CARDINAUX	Leave	Port	47°19.274 N 002°50.095 W
15	COHFOURNIK Hoëdic	Leave	Port	47°19.490 N 002°49.694 W
16	ER GURANNIC'H Hoëdic	Leave	Port	47°20.508 N 002°50.438 W
17	Finish in La Trinité			47°32.500 N 002°59.800 W

\* The Race Authority may replace round the Isle of Man by the rounding or a virtual WP in the Irish Sea, between latitudes 50°N and 56°N

## Course marks

- **Buoys at the ends of the start line:** inflatable buoy
- **Coffre du Becquet:** large yellow special marked shaped like a mooring buoy
- **«URVILLE» mark:** inflatable buoy
- **«DRHEAM CUP» WayPoint:** Virtual WayPoint at position: 48°00.000N; 007°00.000 W
- **«Bilbao Virtual» Waypoint:** Virtual WayPoint at position: 43°50.000N; 003°09.000 W
- **Position of marks:** The position of marks in «Appendix 1 Courses» is for information purposes only, it is the skipper's responsibility to check the information given.

Any error or omission in the information provided cannot lead to requests for redress.

## DRHEAM-CUP FINISH LINE:

### Area: Quiberon Bay:

The finish line will be between a waypoint to leave to port. Coordinates of the point: 47°32.50N 002°59.8 W (a race committee boat may be positioned at this point) and the Cardinal buoy Roche Révision to be left to starboard.

Roche Révision Coordinates: 47°32.60N 002°59.40W



## APPENDIX 2: Areas forbidden to navigation

## 2.1 TSS: TRAFFIC SEPARATION SCHEMES:

No matter what the course, competitors are prohibited from entering the following areas, known as TSS:

## 2.1 Ushant TSS

Restricted zone: a polygon defined by the following coordinates:

A	49°02.050 N	005°36.700 W
B	48°48.600 N	005°25.000 W
C	48°37.200 N	005°11.850 W
D	48°29.350 N	005°22.050 W
E	48°35.000 N	005°42.500 W
F	48°42.500 N	006°03.100 W
G	48°56.400 N	005°51.600 W

## 2.2 Three TSS around the isles of Scilly

Prohibited areas: 3 quadrangles defined by the following coordinates:

West Scilly			South Scilly			Land's End		
A	50°01.070 N	006°32.750 W	A	49°46.050 N	006°16.550 W	A	50°20.000 N	005°49.500 W
B	49°52.300 N	006°36.600 W	B	49°35.540 N	006°16.400 W	B	50°00.970 N	005°49.600 W
C	49°52.400 N	006°53.700 W	C	49°35.550 N	006°34.100 W	C	49°53.550 N	006°04.980 W
D	50°03.950 N	006°48.450 W	D	49°46.030 N	006°29.550 W	D	50°20.000 N	006°05.000 W

### 2.3. Les Casquets TSS

Restricted zone: a quadrangle defined by the following coordinates:

A	50°08.650 N	002°28.100 W
B	49°51.200 N	002°21.100 W
C	49°46.100 N	002°50.300 W
D	50°03.400 N	002°57.400 W

## 2.4 Fastnet TSS

Restricted zone: a quadrangle defined by the following coordinates:

A	51°22.900 N	009°27.400 W
B	51°17.150 N	009°24.600 W
C	51°15.400 N	009°33.900 W
D	51°21.300 N	009°36.700 W

## 2.5 Forbidden zones in South Brittany and Loire Atlantique

**a) The mussel farms near the Rocher de la Vieille in front of Ile de Houat, defined by 4 buoys at the following coordinates:**

- North cardinal buoy: 47°25.040N; 2°56.640W
- East cardinal buoy: 47°24.910N; 2°56.195W
- Special mark: 47°24.45N; 2°56.55W
- Special mark: 47°24.54N; 2°56.75W

**d) Guérande Bank Offshore Wind farm zone**

<https://www.premar-atlantique.gouv.fr/uploads/atlantique/arretes/3f5b66a4c2346810d0d6cc550af2251e.pdf>

Defined by a line joining 12 buoys with the following coordinates:

- ZGuer1: 47°12.400 N 002°42.310W  
 ZGuer2: 47°13.190 N 002°39.300W  
 ZGuer3: 47°11.050 N 002°37.460W  
 ZGuer4: 47°10.440 N 002°35.300W  
 ZGuer5: 47°11.380 N 002°34.450W  
 ZGuer6: 47°10.340 N 002°30.470W  
 ZGuer7: 47°08.990 N 002°29.220W  
 ZGuer8: 47°08.250 N 002°29.710W  
 ZGuer9: 47°06.860 N 002°32.550W  
 ZGuer9': 47°06.750 N 002°33.500W  
 ZGuer10: 47°08.530 N 002°42.850W  
 ZGuer11: 47°10.780 N 002°41.860W

### b) Yeu Aquaculture Zone

- AQUA YEU A : 46°42.350N ; 002°17.950W
- AQUA YEU B : 46°42.649N ; 002°17.250W
- AQUA YEU C : 46°42.254N ; 002°16.905W
- AQUA YEU D : 46°42.200N ; 002°16.800W
- AQUA YEU E : 46°41.899N ; 002°17.400W

### c) Floating offshore wind farm SE Hoëdic – Ouest Basse Capella

Navigation prohibited in the experimental area defined by a line joining 4 buoys (special marks) with the following coordinates:

- North: 47°14.70N      2°46.58W
- East: 47°14.33N      2°46.03W
- South: 47°13.94N      2°46.88W
- West: 47°14.34 N      2°47.38 W





## APPENDIX 3 «Self-reporting»

To be completed during navigation, and to be handed to the race office during check-out at the finish.

Local times, UT+2

DREAM CUP 600 Identification	
Name of the boat: _____	No. _____
Name of skipper: _____	

<b>Shambles West</b>	Date and time: _____
	Boat in front: _____
	Boat behind: _____

<b>Wolf rock</b>	Date and time: _____
	Boat in front: _____
	Boat behind: _____

<b>Rochebonne NW</b>	Date and time: _____
	Boat in front: _____
	Boat behind: _____

<b>Finish line</b>	Date and time: _____
	Boat in front: _____
	Boat behind: _____

Signature: \_\_\_\_\_

## APPENDIX 3 «Self-reporting»

To be completed during navigation, and to be handed to the race office during check-out at the finish.

Local times, UT+2

DREAM CUP 1000 Identification	
Name of the boat: _____	No. _____
Name of skipper: _____	

<b>Shambles West</b>	Date and time: _____
	Boat in front: _____
	Boat behind: _____

<b>Fastnet</b>	Date and time: _____
	Boat in front: _____
	Boat behind: _____

<b>BXA</b>	Date and time: _____
	Boat in front: _____
	Boat behind: _____

<b>Finish line</b>	Date and time: _____
	Boat in front: _____
	Boat behind: _____

Signature: \_\_\_\_\_



## APPENDIX 3 «Self-reporting»

To be completed during navigation, and to be handed to the race office during check-out at the finish.

Local times, UT+2

### DREAM CUP 1500 Identification

Name of the boat: \_\_\_\_\_

No. \_\_\_\_\_

Name of skipper: \_\_\_\_\_

#### Shambles West

Date and time: \_\_\_\_\_

Boat in front: \_\_\_\_\_

Boat behind: \_\_\_\_\_

#### Fastnet

Date and time: \_\_\_\_\_

Boat in front: \_\_\_\_\_

Boat behind: \_\_\_\_\_

#### Bilbao Virtuel

Date and time: \_\_\_\_\_

Boat in front: \_\_\_\_\_

Boat behind: \_\_\_\_\_

#### Finish line

Date and time: \_\_\_\_\_

Boat in front: \_\_\_\_\_

Boat behind: \_\_\_\_\_

Signature: \_\_\_\_\_





# DRHEAM CUP<sub>2022</sub>

CHERBOURG > LA TRINITÉ

13 > 24 JULY 2022

*Merci  
à nos partenaires !*

## CHERBOURG en Cotentin



[www.drheam-cup.com](http://www.drheam-cup.com)